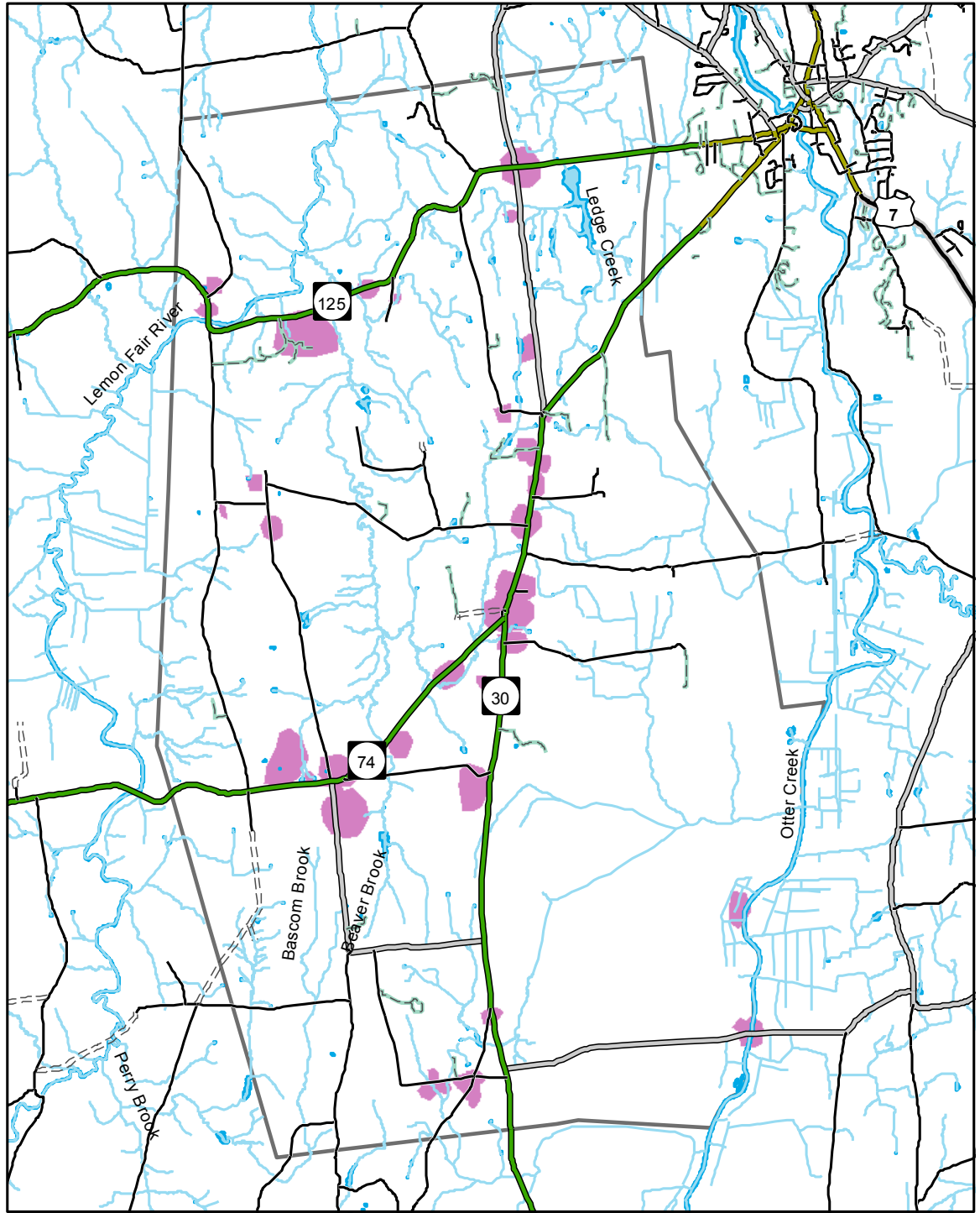
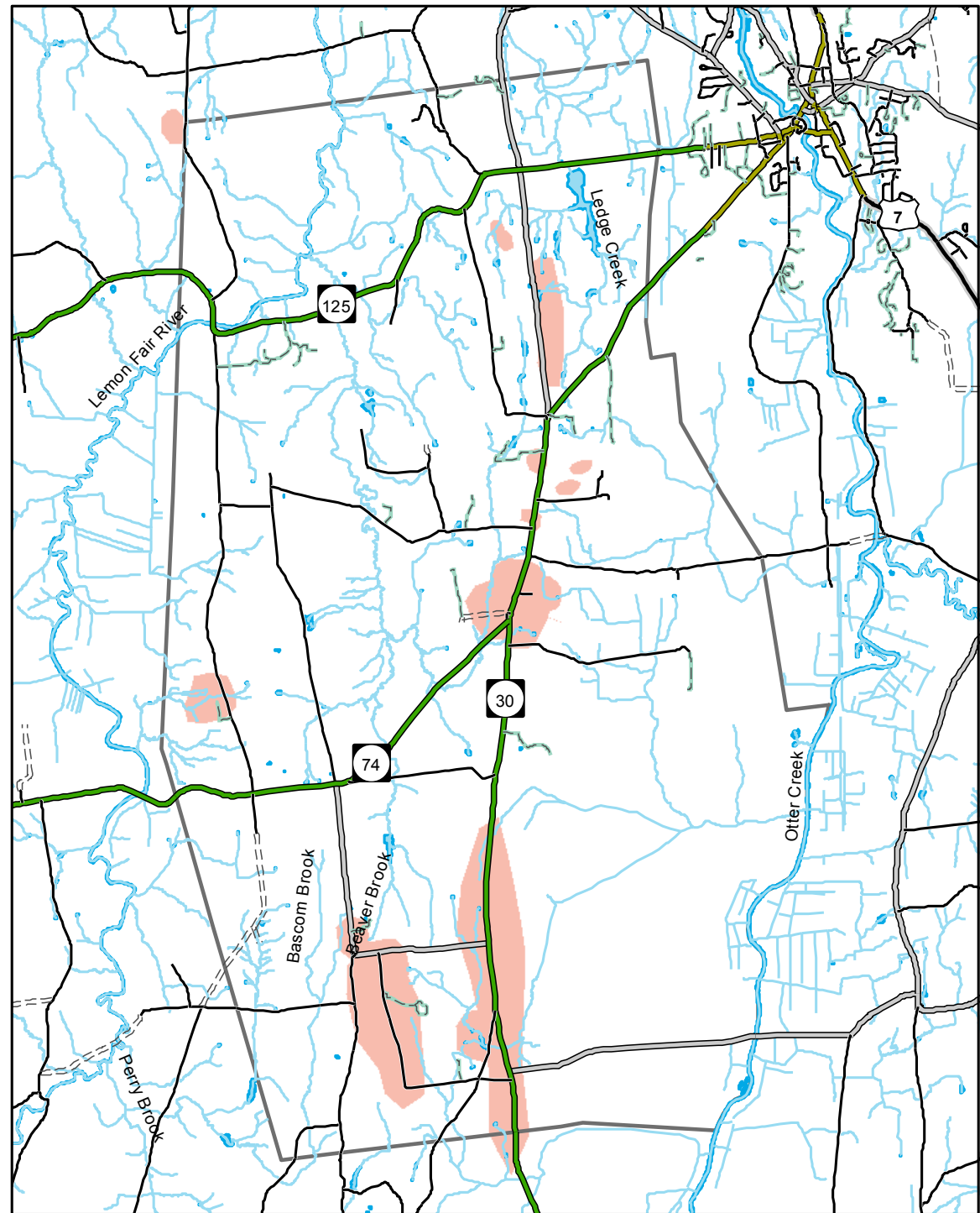


# Cornwall Community Values

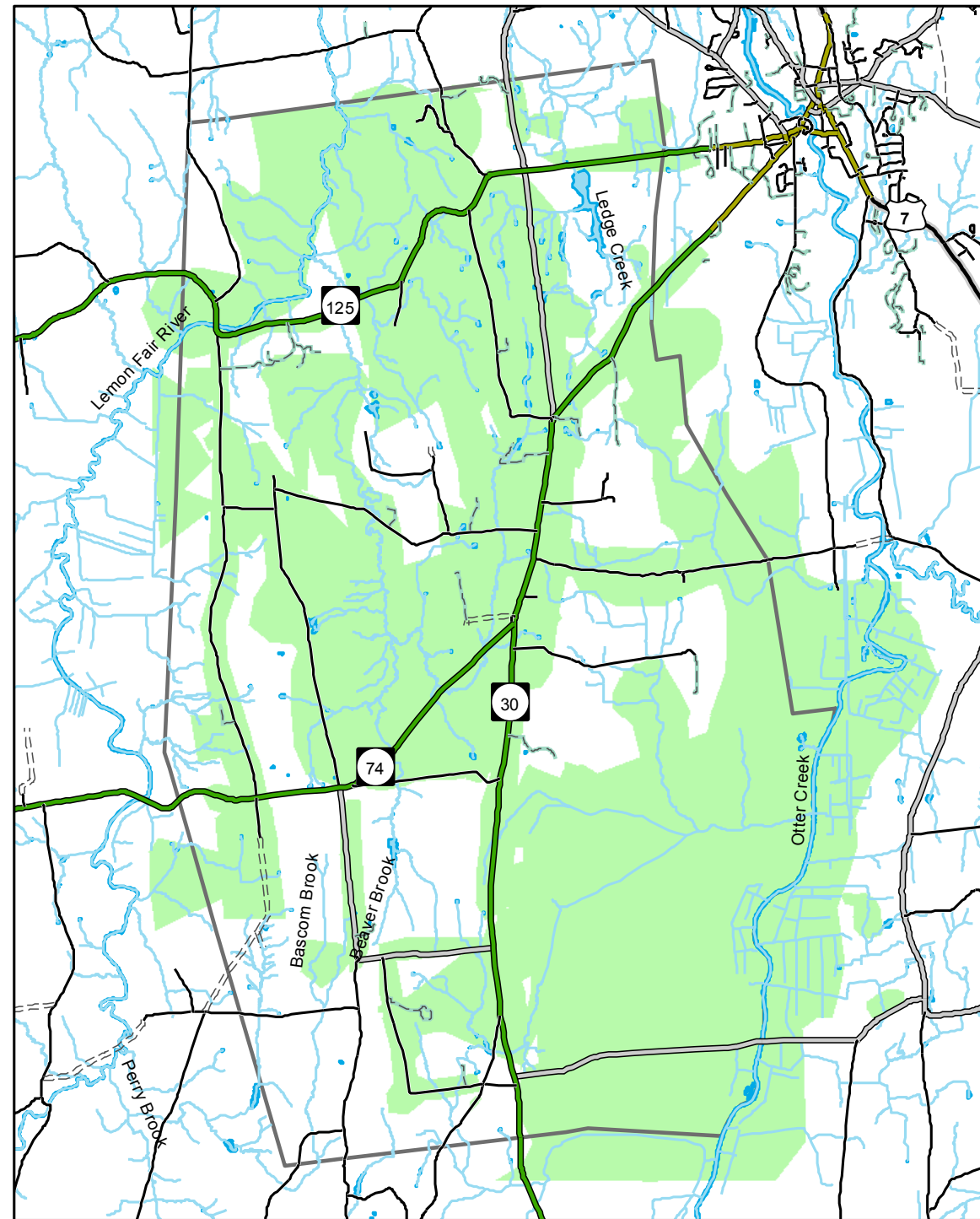
## Historic



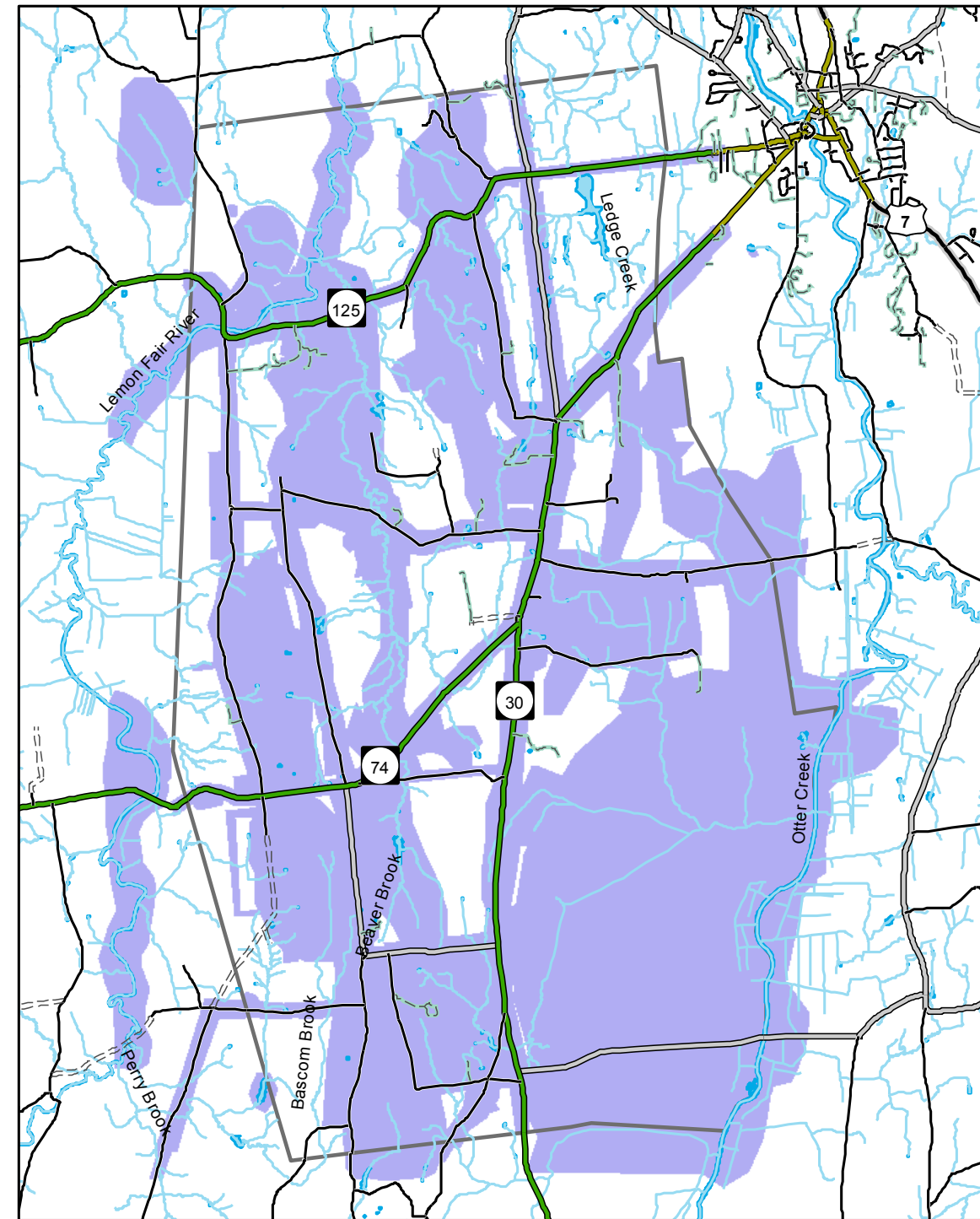
## Community Places



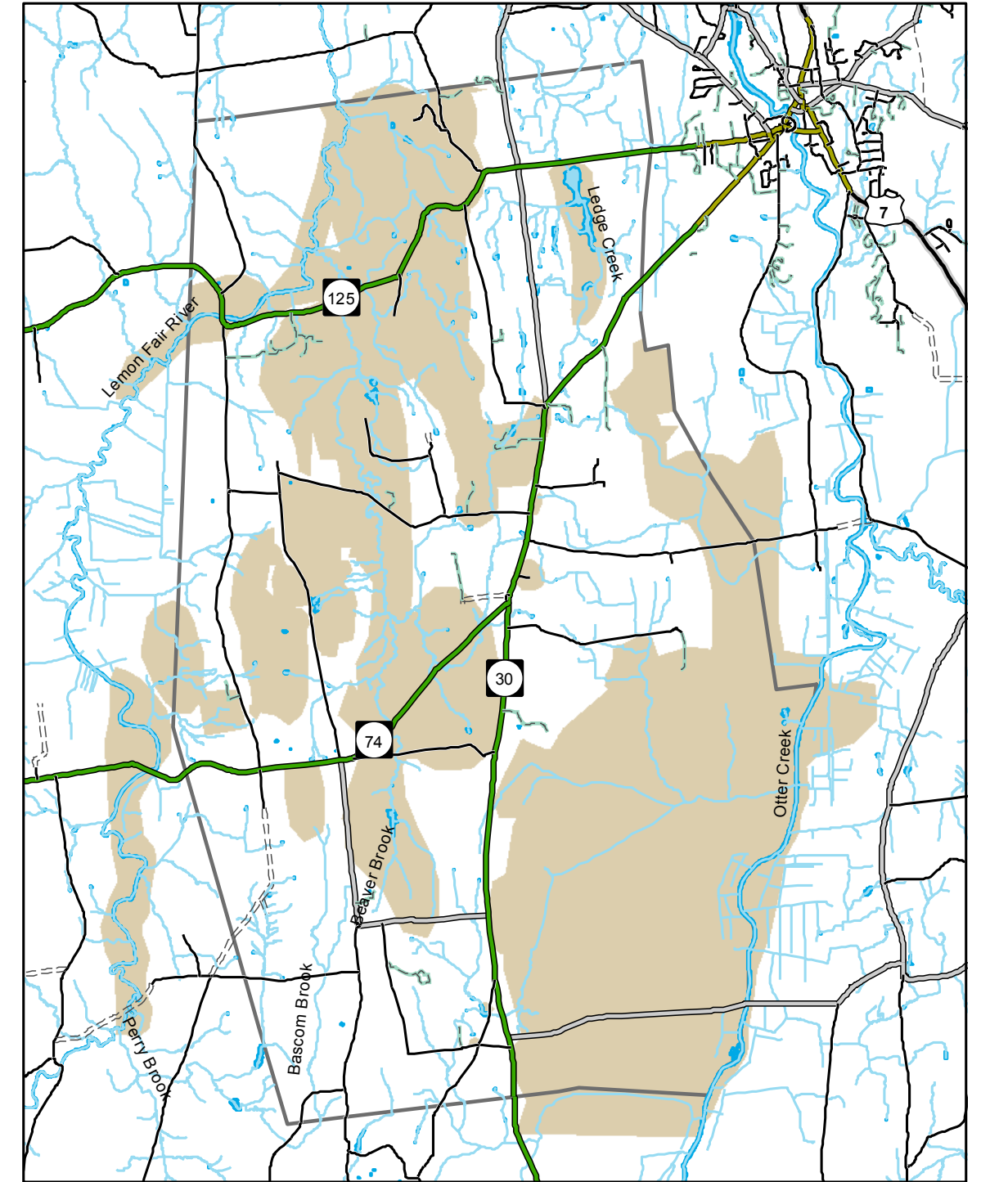
## Scenic



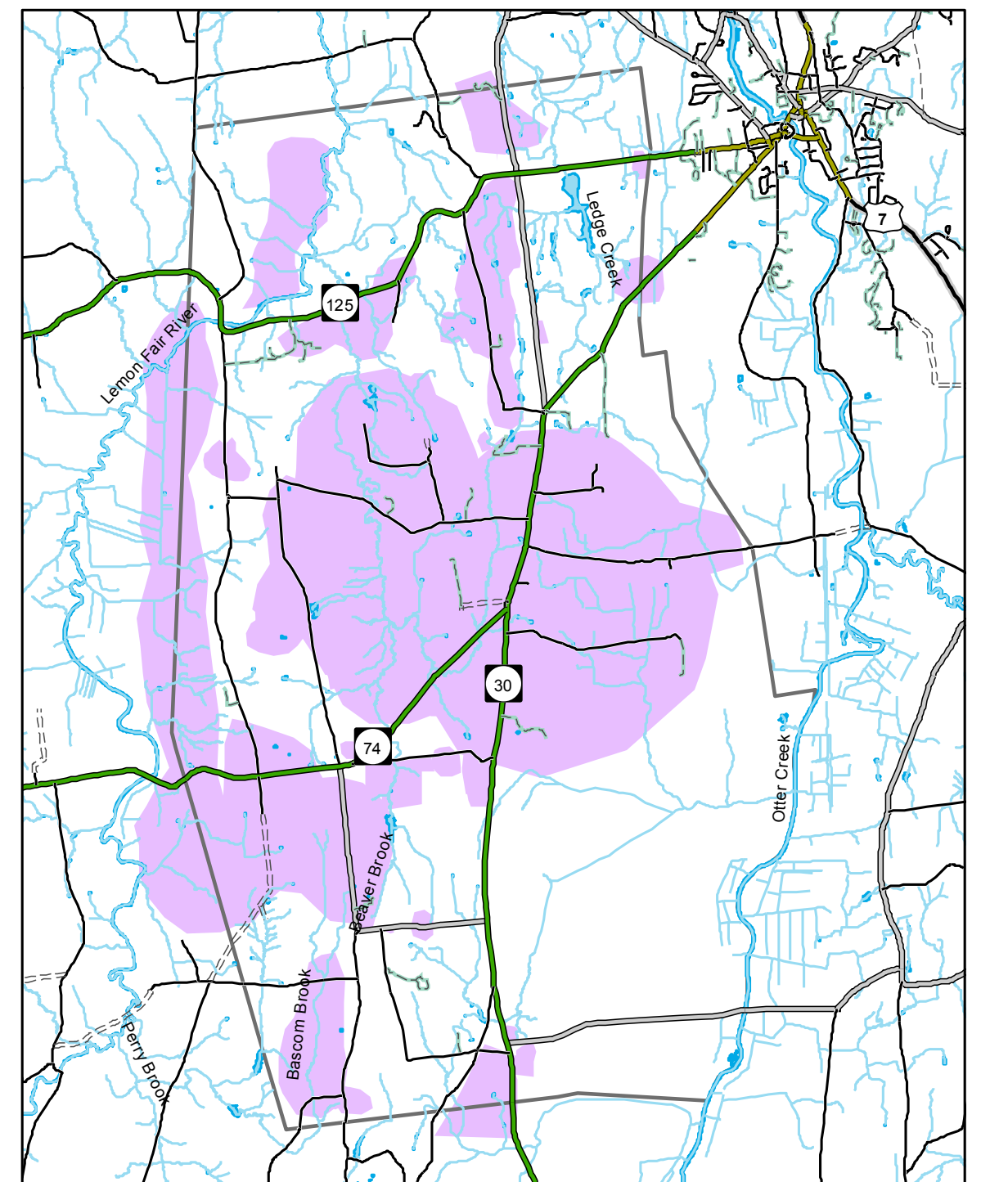
## Recreation



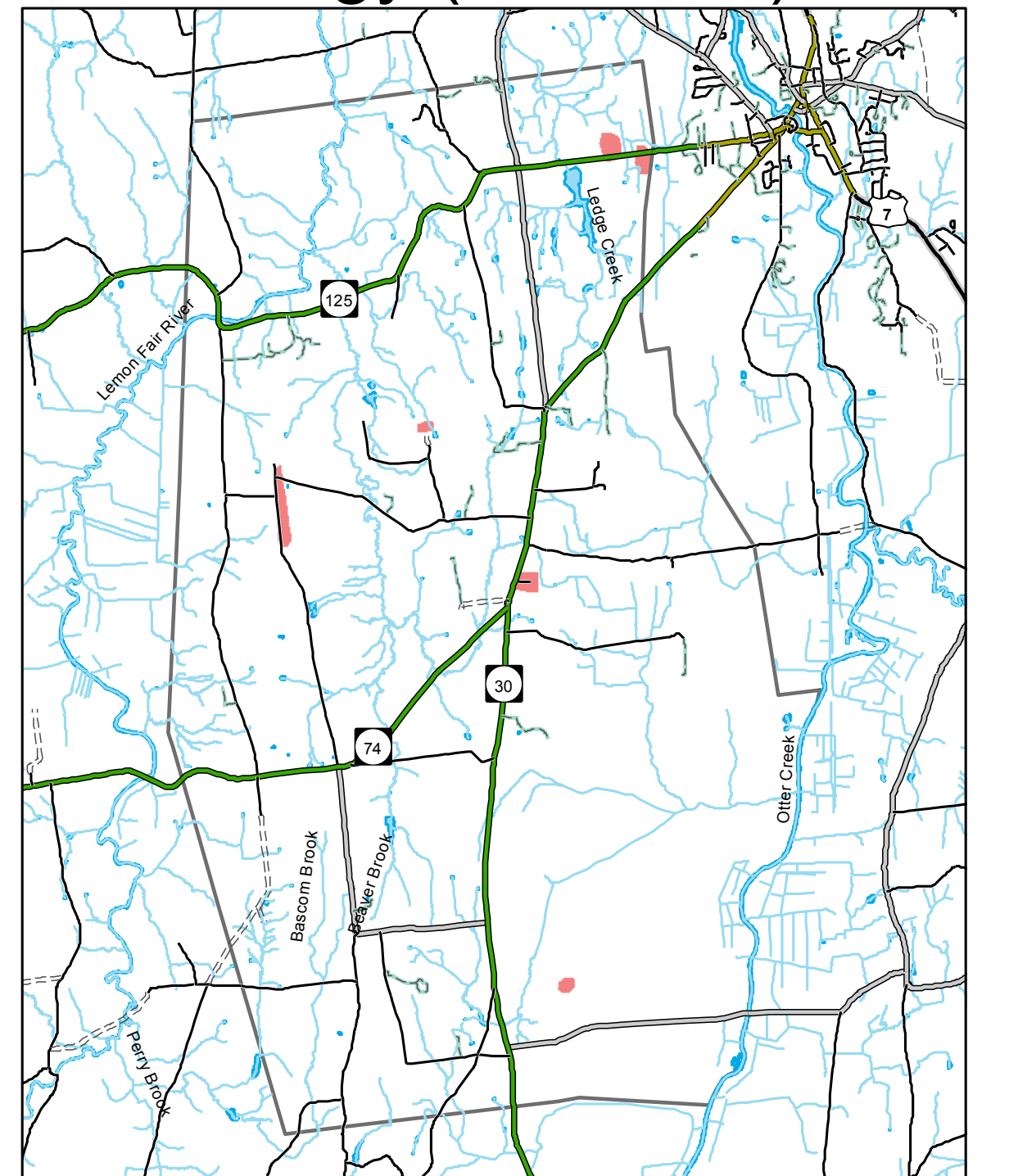
# Wildlife



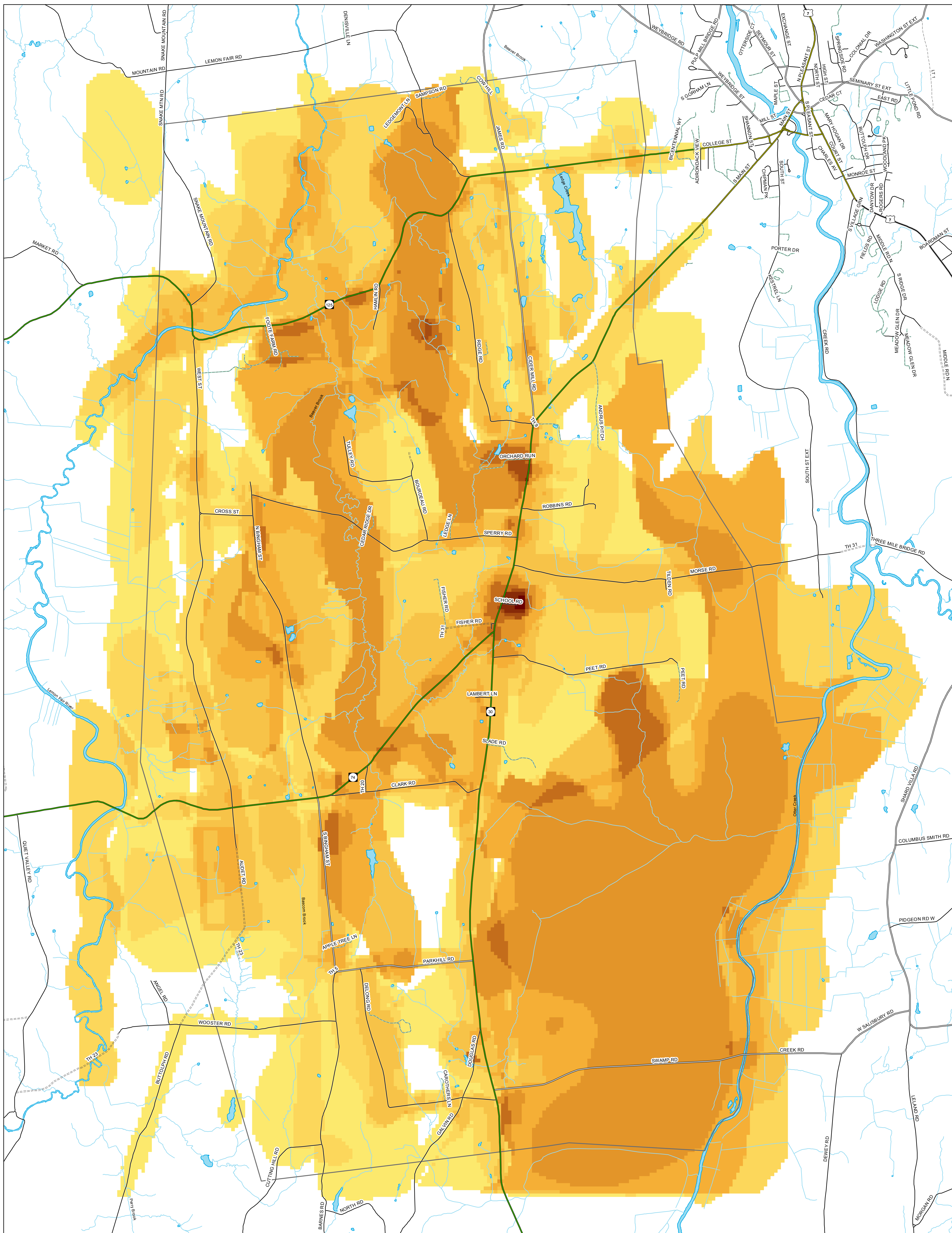
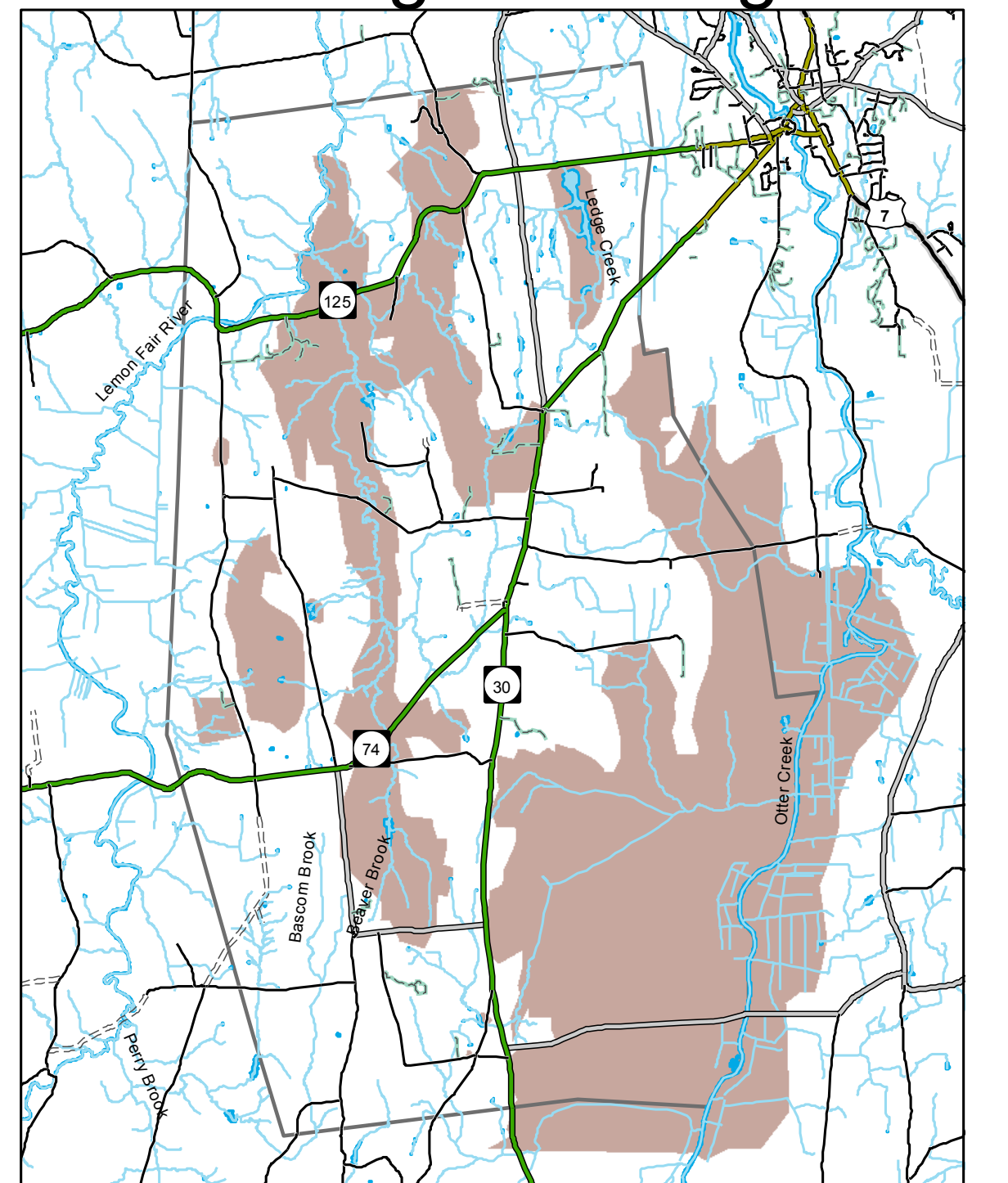
## Farms & Working Lands



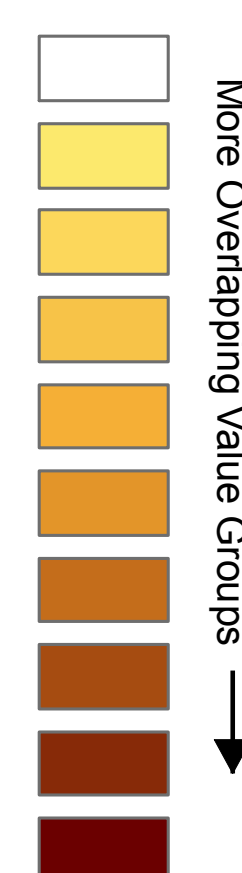
Energy (Potential)



## Hunting & Fishing



### # Overlapping Values



Overlapping Values uses the eight value groups (insets) to show concentration of overlapping groups within the town. Darker colors show more overlap and hence interest from a greater diversity of perspectives.

63 community members attended a values mapping event at the Cornwall School on October 12th, 2016. Participants were divided into eight small groups and each group drew polygons on a basemap to express their values. These were then grouped and brought together to create this map.

**Data Sources; Vermont Center for  
Geographic Information, Vermont  
Fish and Wildlife Department  
State Plane Projection  
NAD1983 Datum  
Map by Jens Hilke  
December, 2016**

