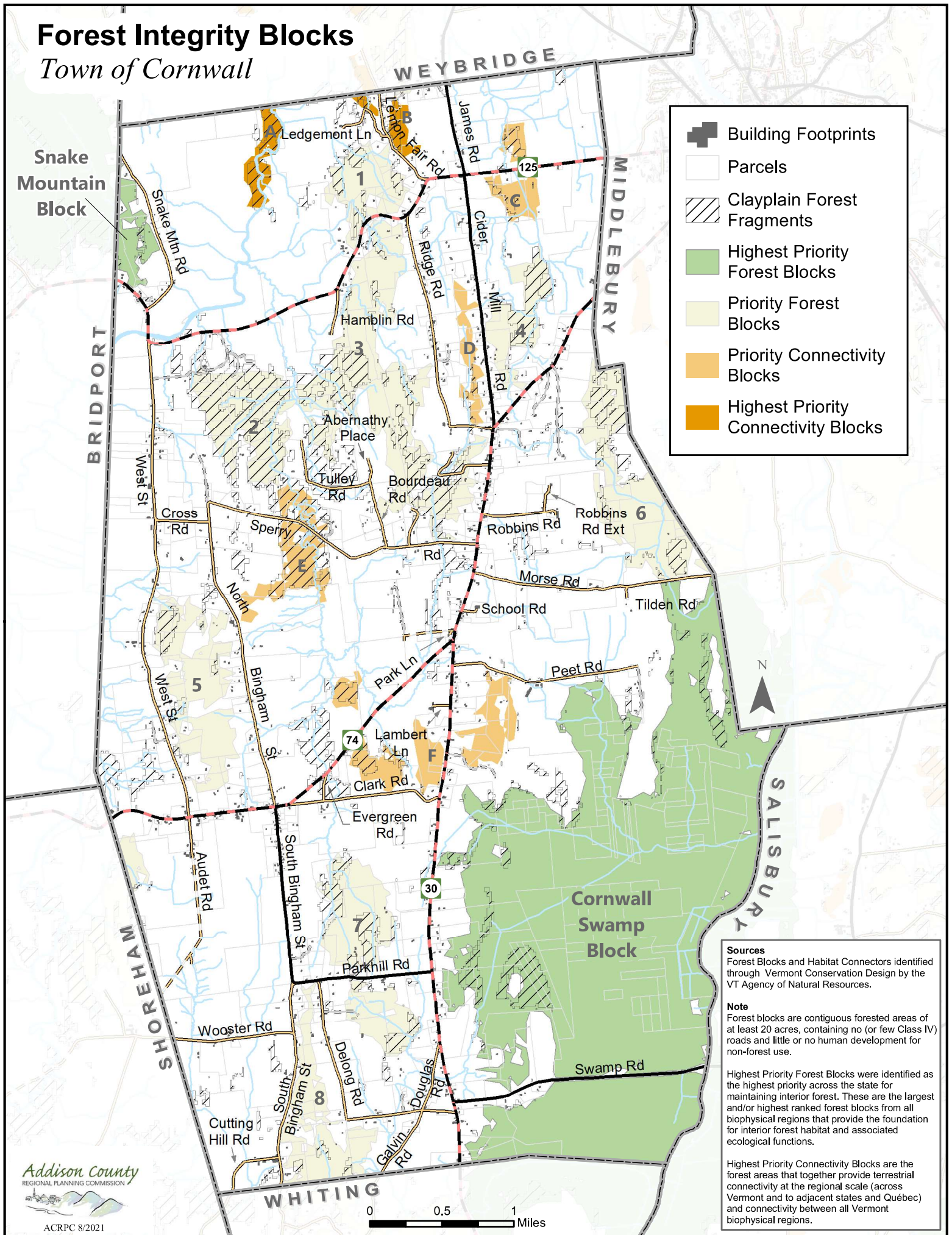


Forest Integrity Blocks

Town of Cornwall



- Building Footprints
- Parcels
- Clayplain Forest Fragments
- Highest Priority Forest Blocks
- Priority Forest Blocks
- Priority Connectivity Blocks
- Highest Priority Connectivity Blocks

Sources
 Forest Blocks and Habitat Connectors identified through Vermont Conservation Design by the VT Agency of Natural Resources.

Note
 Forest blocks are contiguous forested areas of at least 20 acres, containing no (or few Class IV) roads and little or no human development for non-forest use.

Highest Priority Forest Blocks were identified as the highest priority across the state for maintaining interior forest. These are the largest and/or highest ranked forest blocks from all biophysical regions that provide the foundation for interior forest habitat and associated ecological functions.

Highest Priority Connectivity Blocks are the forest areas that together provide terrestrial connectivity at the regional scale (across Vermont and to adjacent states and Québec) and connectivity between all Vermont biophysical regions.